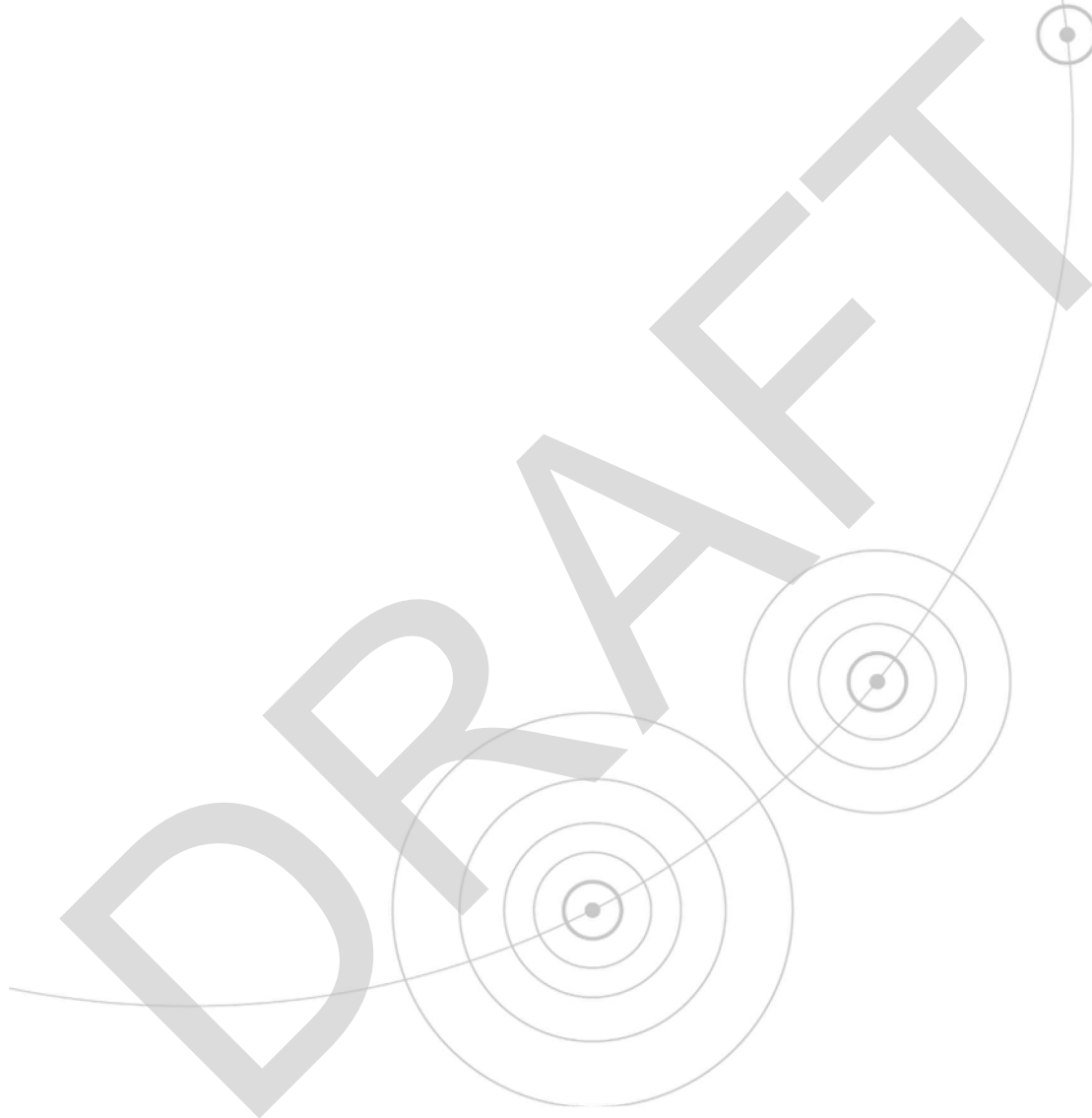
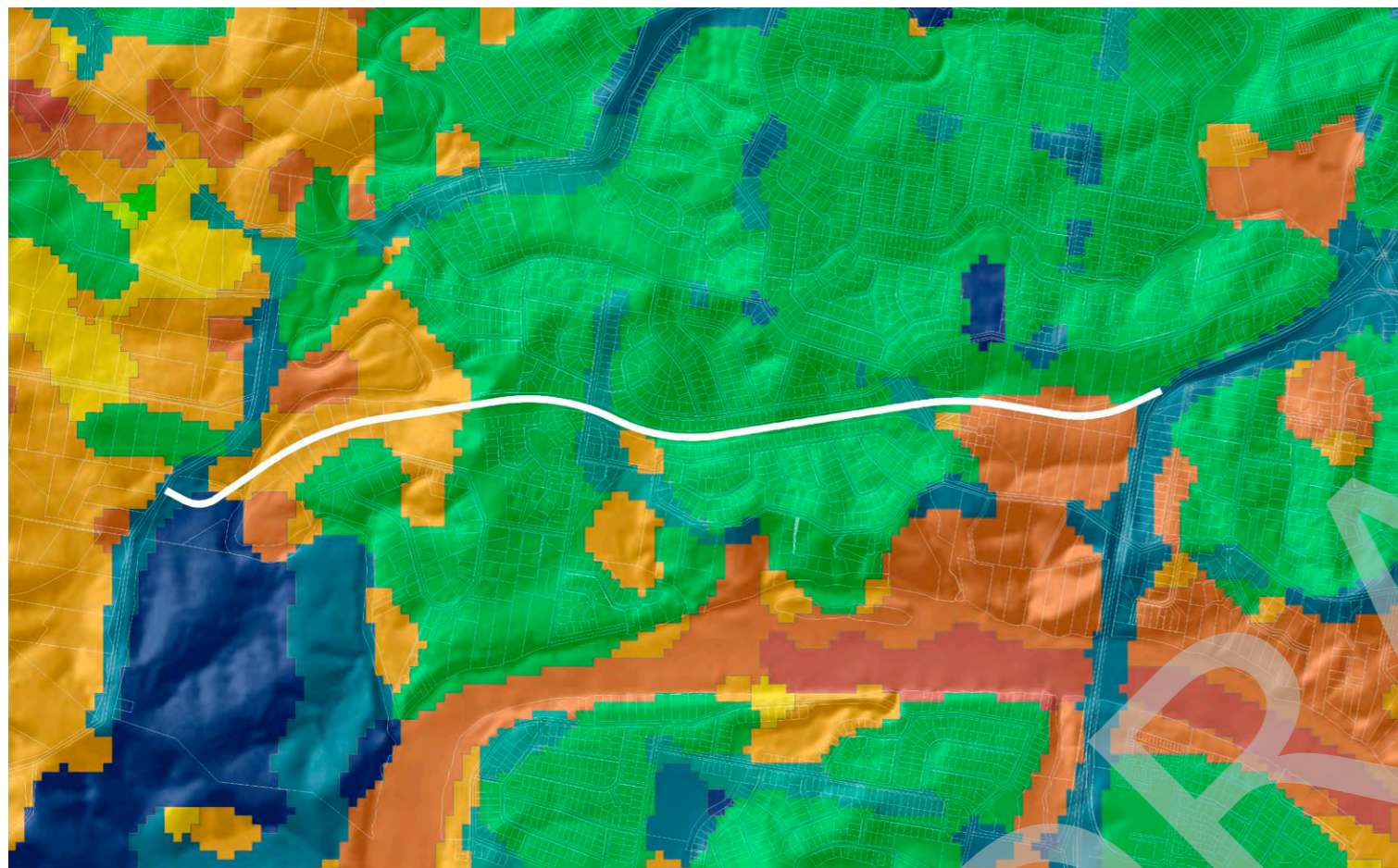


DRAFT

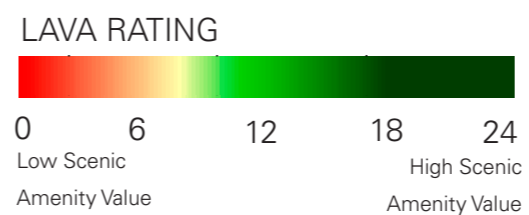
Appendix 13-B Landscape and Visual Amenity Figures



Extract of Scenic Amenity Mapping 2004



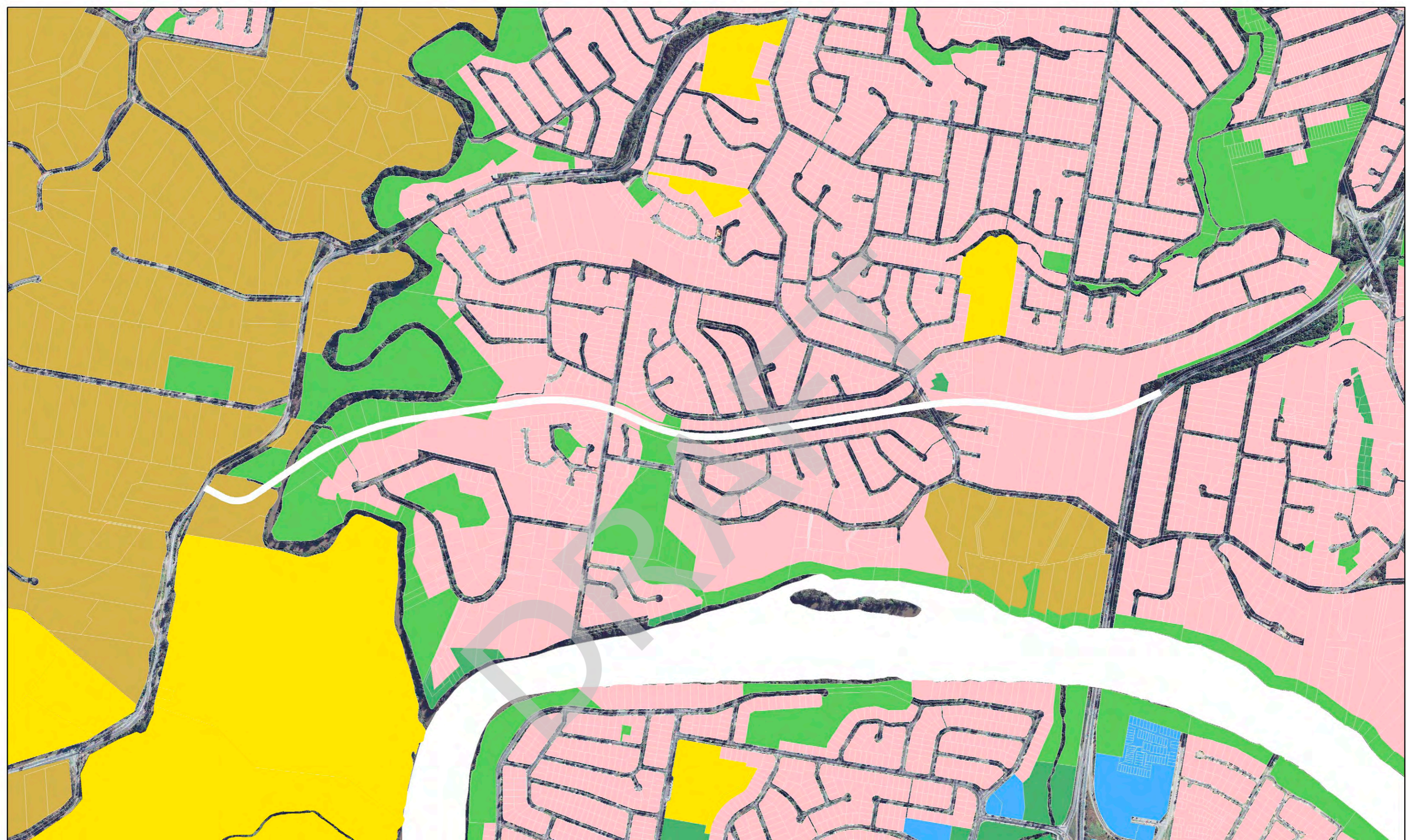
Extract of LAVA Mapping 2006



Not too scale

FIGURE 1 EXTRACT OF SCENIC AMENITY AND LANDSCAPE AMENITY VALUES AND ATTRIBUTES

2853 - Kenmore Bypass VIA

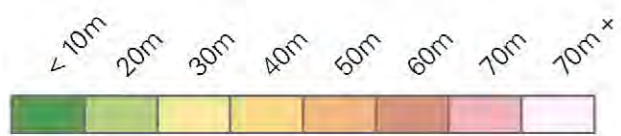
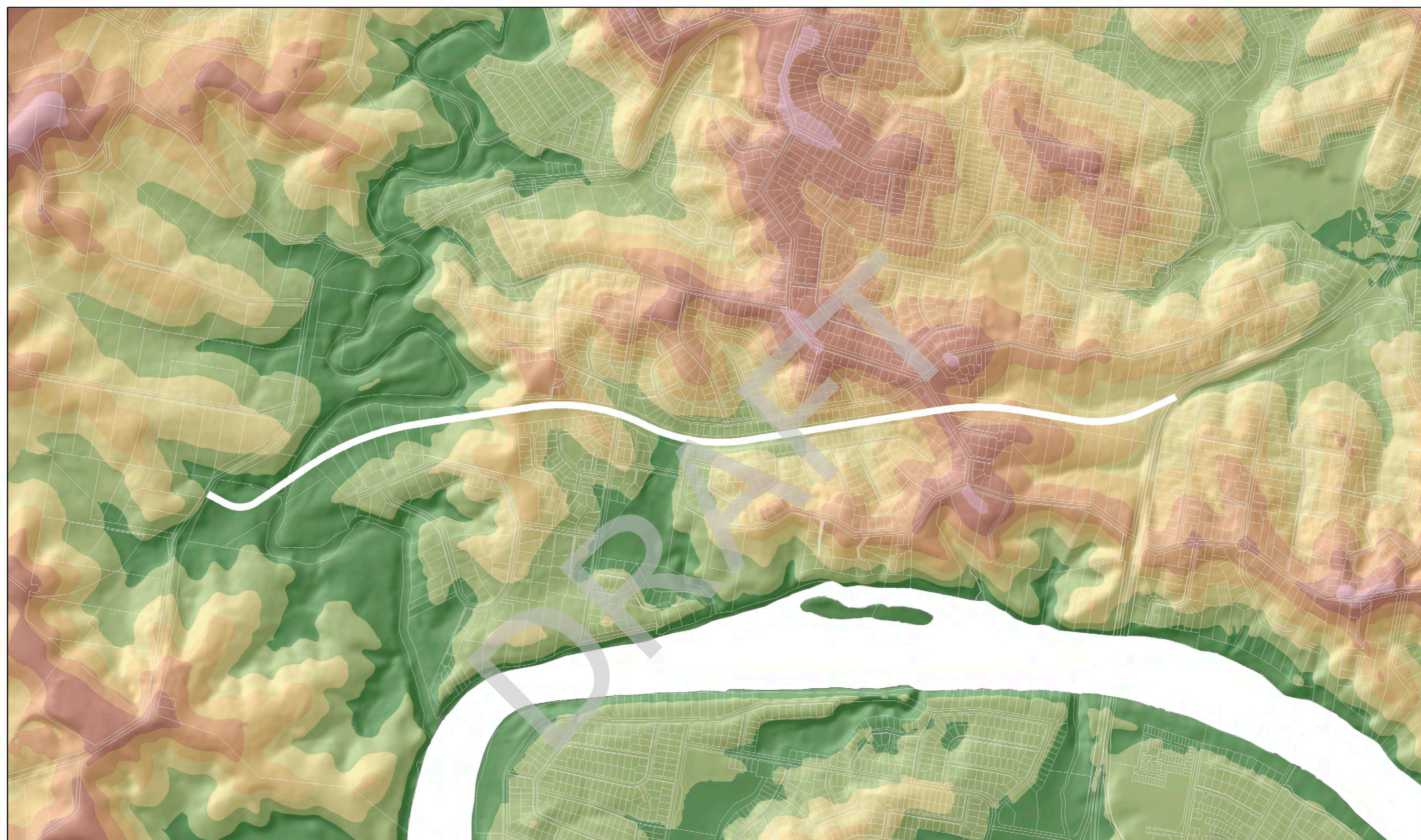



- | | |
|--|--|
| ■ SPECIAL PURPOSES | ■ CONSERVATION |
| ■ SPORT & RECREATION / OPEN SPACE | ■ RURAL |
| ■ URBAN | ■ SPECIAL FACILITIES |

1:10,000 at A3 0 250 500 Metres

FIGURE 2 / LAND USE AND ZONING

2853 - Kenmore Bypass VIA



 Proposed Bypass

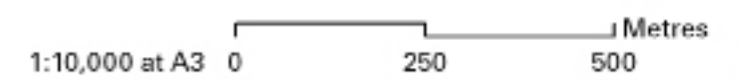


FIGURE 3 / TOPOGRAPHY ANALYSIS: ELEVATION

2853 - Kenmore Bypass VIA

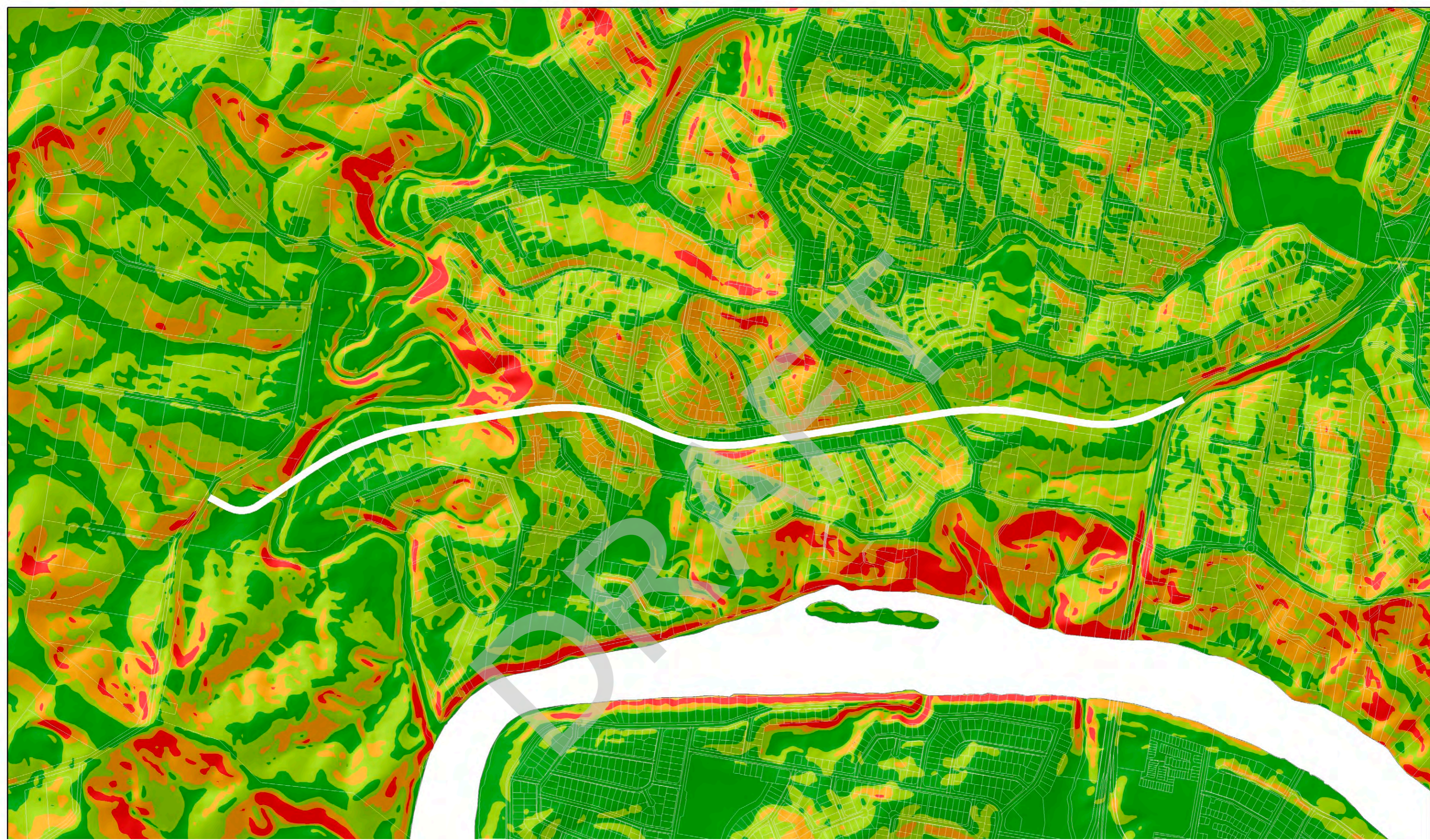


FIGURE 4 / TOPOGRAPHY ANALYSIS: SLOPE

2853 - Kenmore Bypass VIA



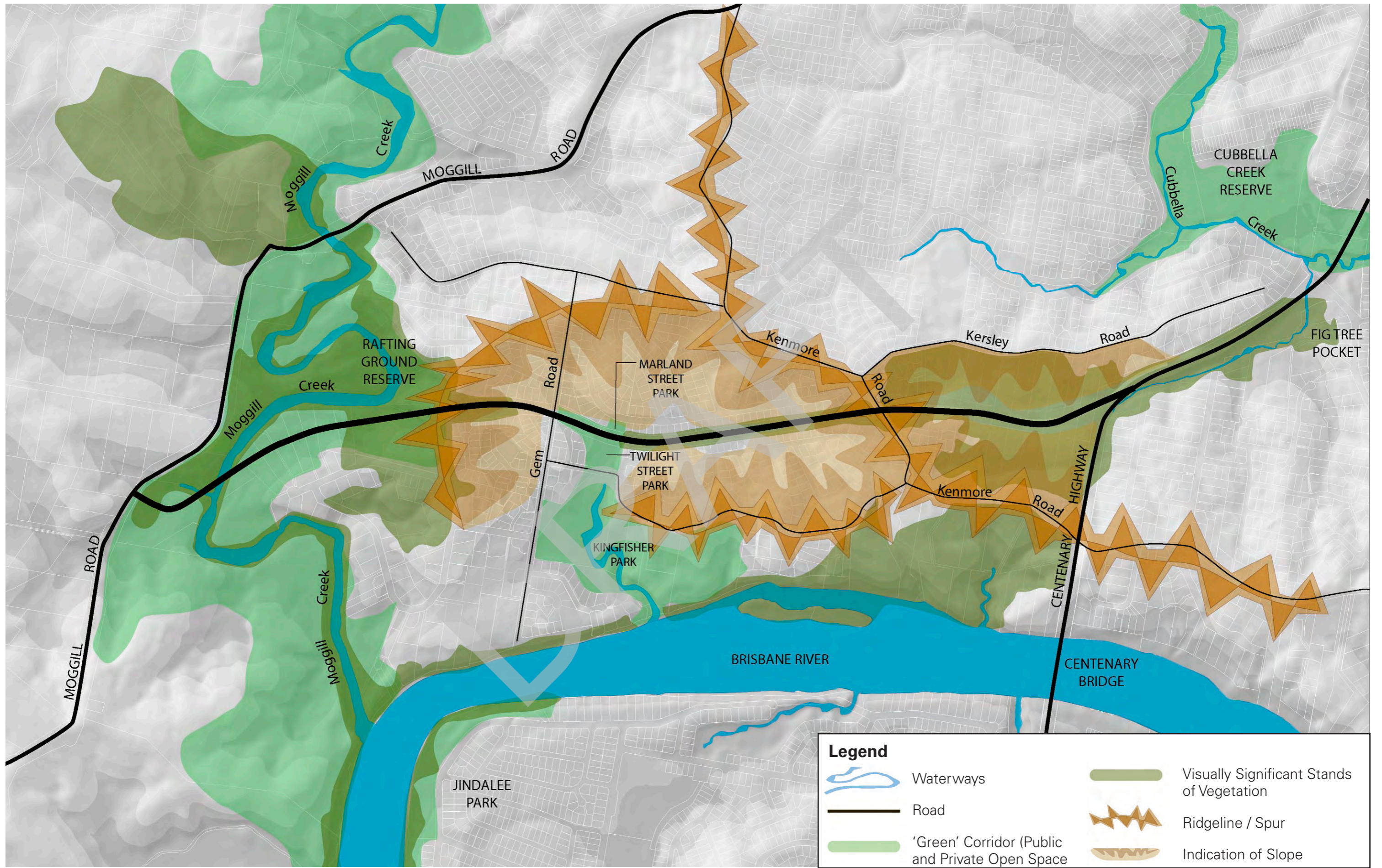
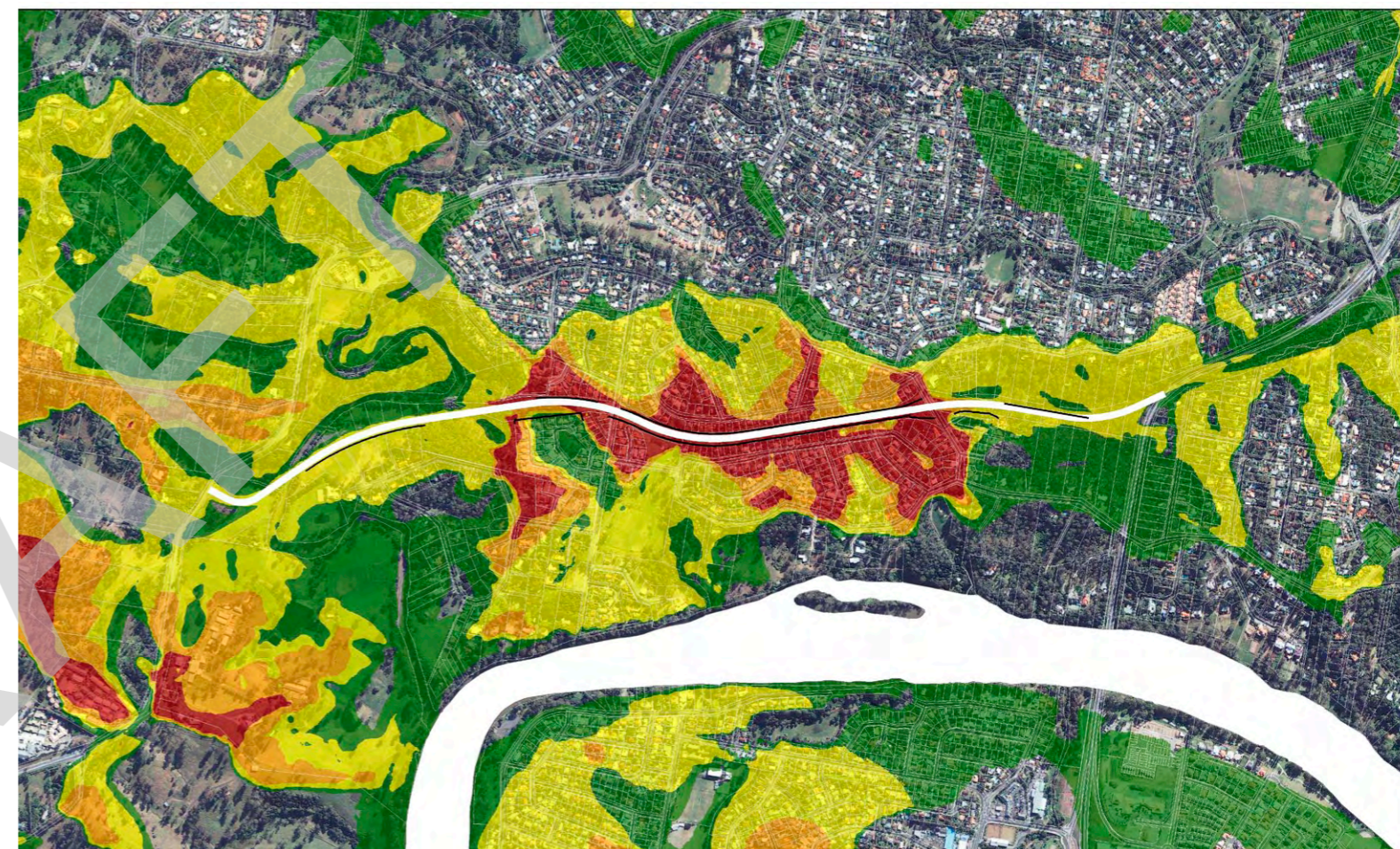


FIGURE 5 / LANDSCAPE ANALYSIS

2853 - Kenmore Bypass VIA



Proposed Road Alignment: Zone of Visual Influence



Proposed Road Alignment and Noise Barriers: Zone of Visual Influence

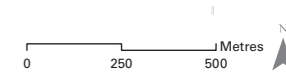
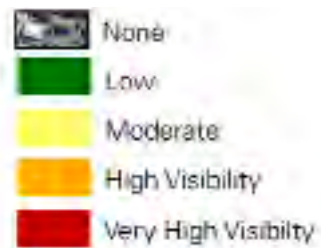


FIGURE 6 / PROPOSED ROAD ALIGNMENT AND NOISE BARRIERS: ZONES OF VISUAL INFLUENCE

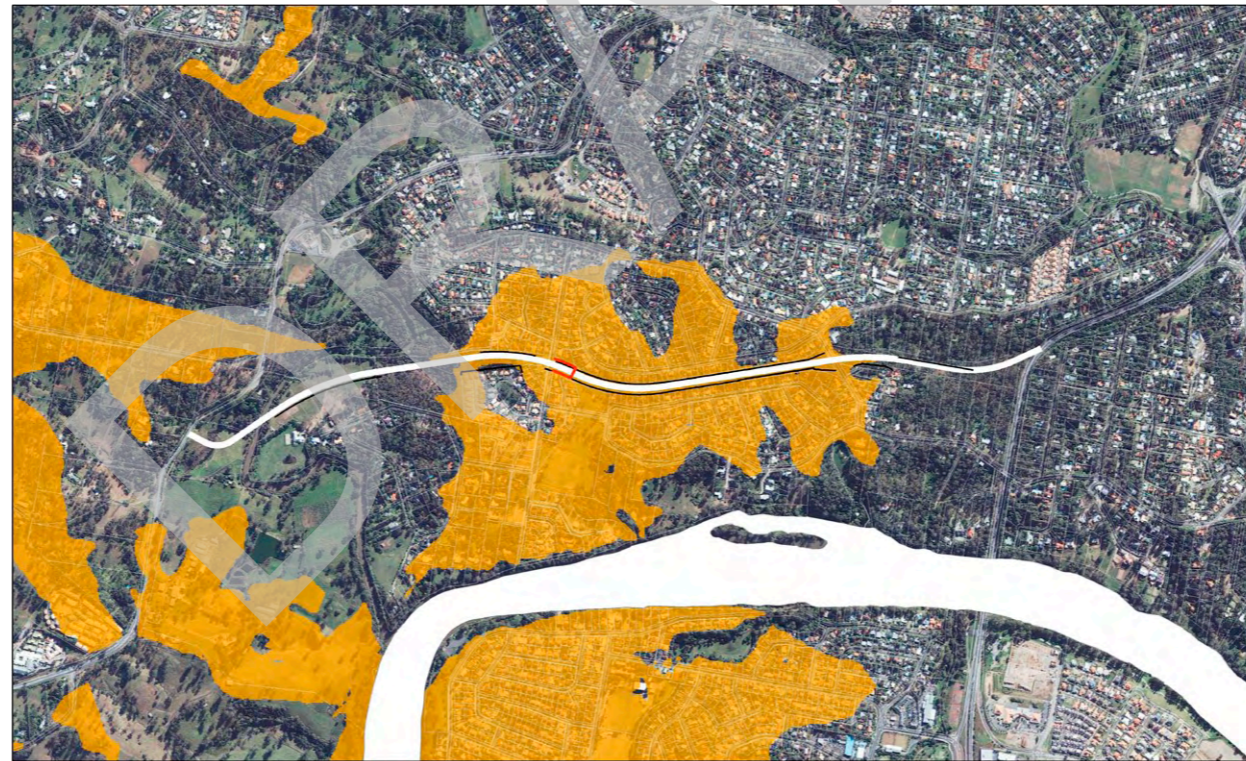
2853 - Kenmore Bypass VIA



Pedestrian Bridge Option A: Zone of Visual Influence



Pedestrian Bridge Option C: Zone of Visual Influence



Pedestrian Bridge Option B: Zone of Visual Influence

- Pedestrian Bridge
- Not Visible
- Visible
- Proposed Bypass with Noise Barriers

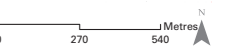


FIGURE 7 / PEDESTRIAN BRIDGES: ZONES OF VISUAL INFLUENCE

2853 - Kenmore Bypass VIA

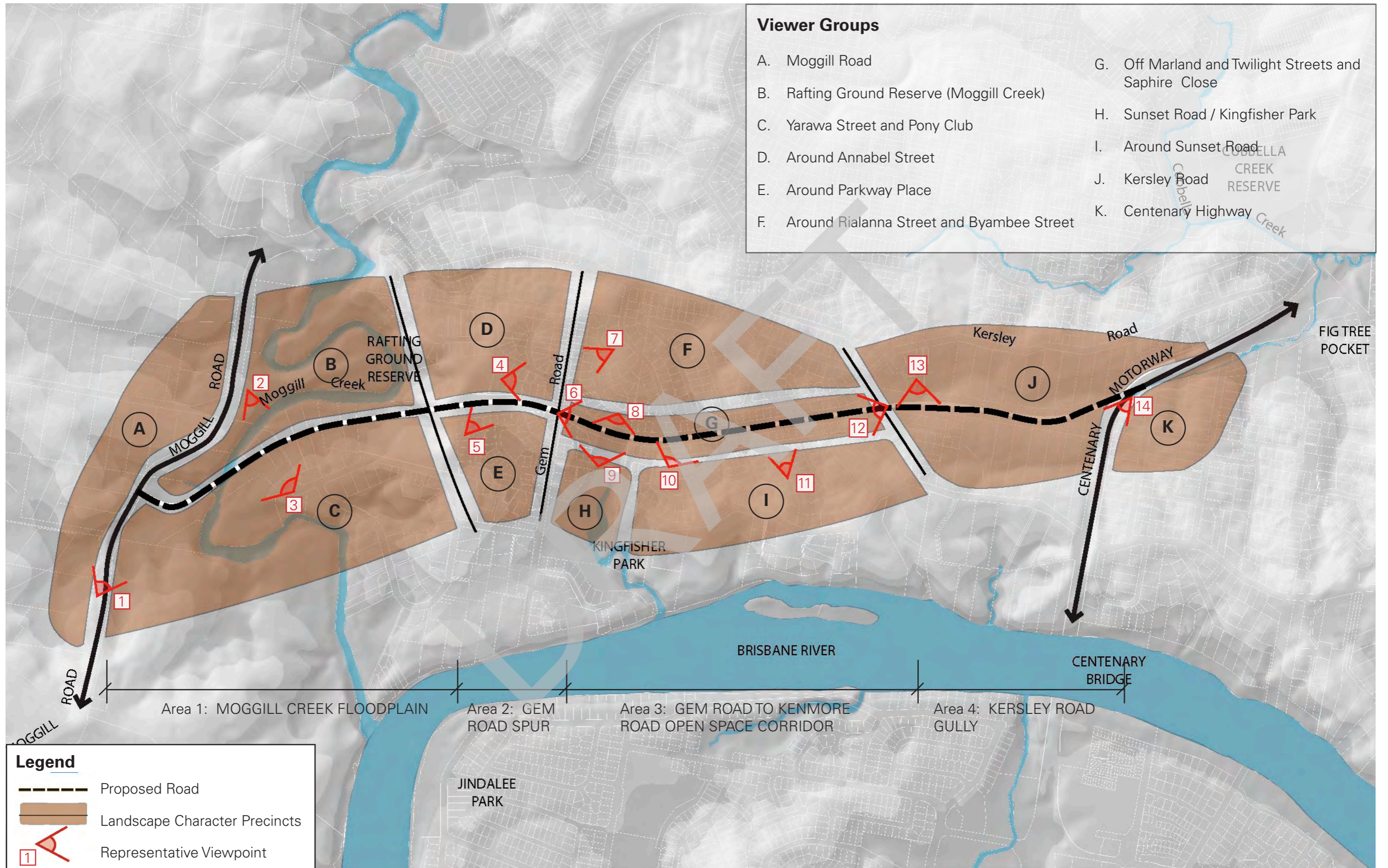


FIGURE 8 / VISUAL ASSESSMENT